

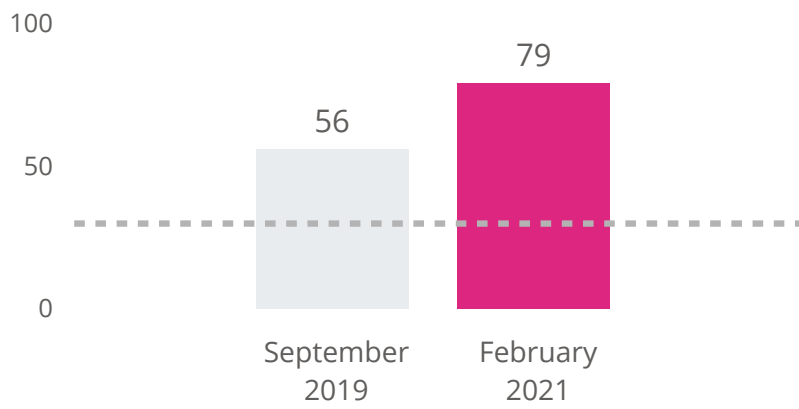
Orange County Emergency Shelter Goals & Outcomes

11/1/2019 to 10/31/2020

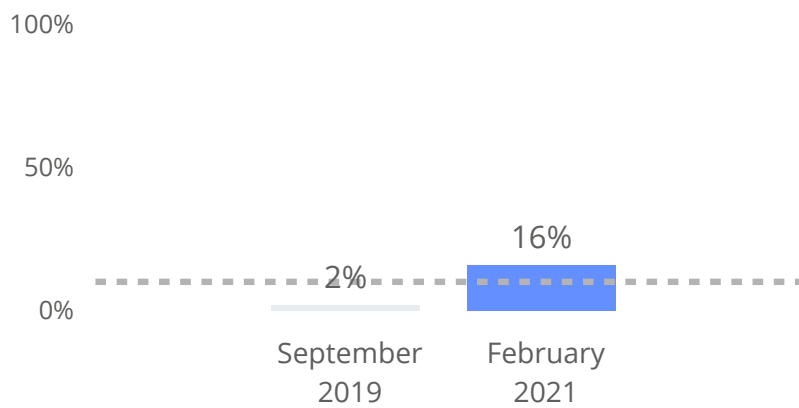
Emergency Shelter projects in the Orange County Continuum of Care (CoC) met **2 out of 7** thresholds as a project type.



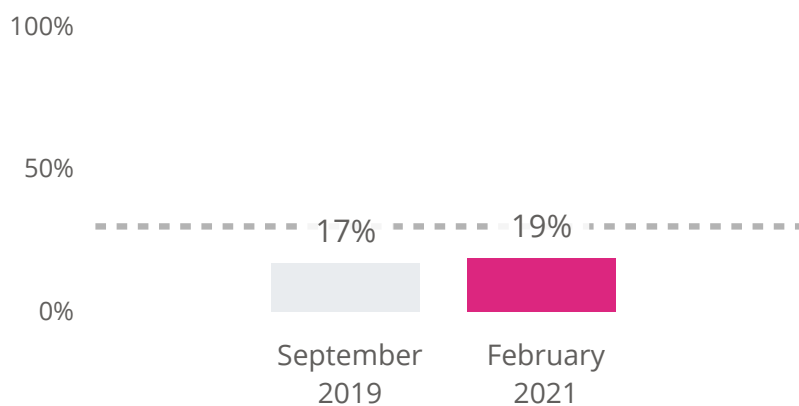
Goal 2 - Decrease Length of Stay in Temporary Shelter & Outreach (<=30 Days)



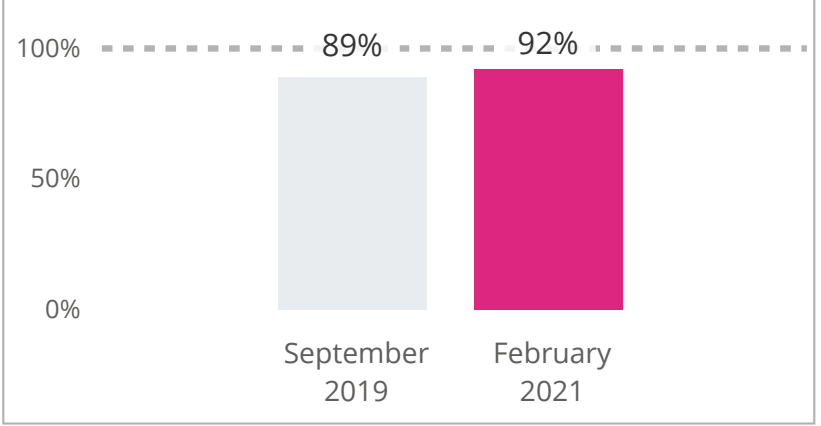
Goal 6 - Help Adults Increase Their Income while Enrolled in the Project (>= 10%)



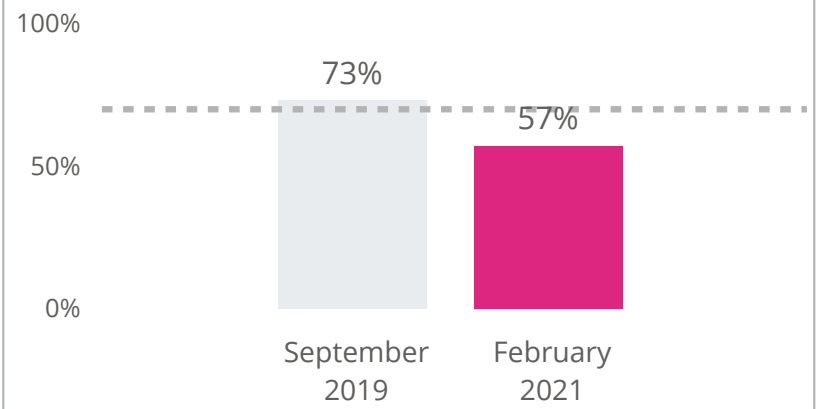
Goal 8 - Help Clients Exit to Successful Housing Situations (>= 30%)



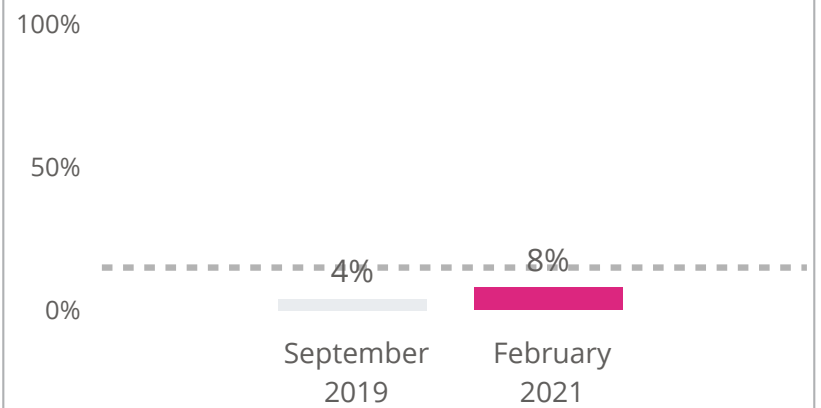
Goal 1 - Prioritize Clients Experiencing Literal Homelessness (100%)



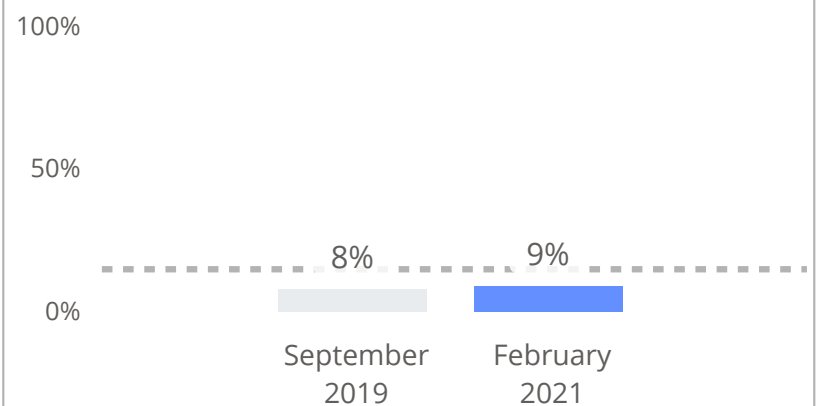
Goal 5 - Ensure Projects are being Fully Utilized (>= 70%)



Goal 7 - Help Adults Increase Their Income as of Project Exit (>= 15%)



Goal 10 - Ensure Clients Do Not Fall Back Into Homelessness after being Housed (<= 15%)



Goal 1 - Prioritize Clients Experiencing Literal Homelessness

Goal 1 Scores

Threshold: 100%

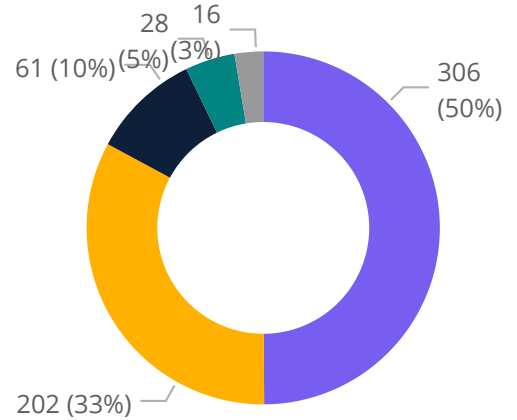
Project Type Score	Chronically Homeless	Veterans	Households with Children	Households without Children	Households with only Children
92%	100%	94%	94%	94%	7%
<i>n</i> = 7,801	<i>n</i> = 2,905	<i>n</i> = 425	<i>n</i> = 441	<i>n</i> = 7,166	<i>n</i> = 188

Orange County CoC Goal: 100% of heads of household enroll in Emergency Shelter projects from homeless situations.

Why? Enrolling clients from literal homeless situations is important because clients experiencing literal homelessness are among the most vulnerable of all Orange County residents experiencing homelessness.

Enrollments by Non-Homeless Entry Category

- Family/Friends
- Institutional Setting
- Temporary Situation
- Permanent Housin...
- Missing



Goal 2 - Decrease Length of Stay in Temporary Shelter & Outreach

Goal 2 Scores

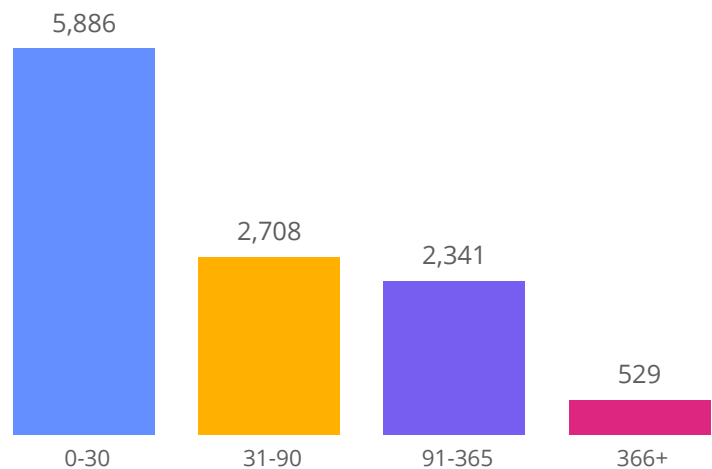
Threshold: <=30 Days

Project Type Score	Chronically Homeless	Veterans	Households with Children	Households without Children	Households with only Children
79	95	75	78	81	9
<i>n</i> = 11,464	<i>n</i> = 3,406	<i>n</i> = 523	<i>n</i> = 1,730	<i>n</i> = 9,535	<i>n</i> = 190

Orange County CoC Goal: Emergency Shelter project enrollments are no longer than 30 days from project entry to project exit.

Why? Emergency Shelter projects are meant to provide "temporary shelter (lodging) for the homeless in general or for specific populations of the homeless" (HUD Data Standards Manual.) Because clients are considered to be experiencing homelessness while residing in Emergency Shelter projects, it is important to target efforts to move clients into stable housing in a timely manner.

Enrollments by Length of Stay



Goal 5 - Ensure Projects are being Fully Utilized

Goal 5 Scores

Threshold: >=70%

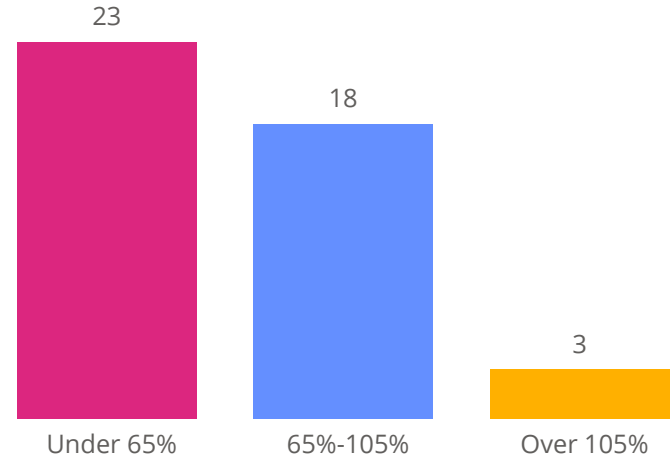
Project Type	Households with Children	Households without Children	Households with Only Children
57%	89%	56%	38%
n = 7,981	n = 413	n = 7,380	n = 188

Orange County CoC Goal: Emergency Shelter projects have a unit utilization score of at least 70%.

Why? To ensure that clients experiencing homelessness are being sheltered while they move toward permanent housing.

Scores under 65% and above 105% can sometimes be caused by data timeliness issues such as enrollments not being entered in HMIS or exited from HMIS in a timely manner.

Projects by Utilization Category



Goal 6 - Help Adults Increase Their Income while Enrolled in the Project

Goal 6 Scores

Threshold: >=10%

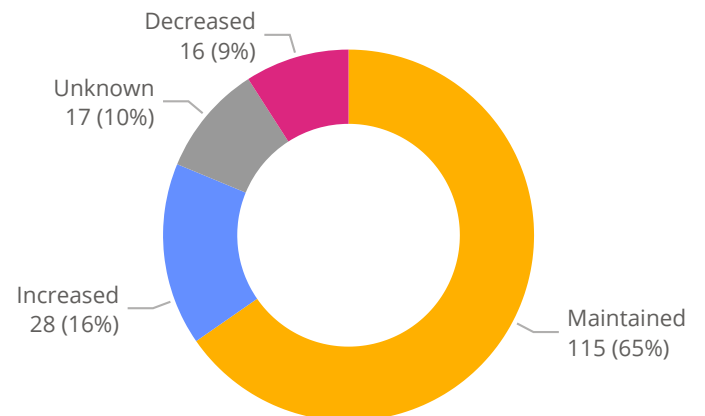
Project Type Score	Chronically Homeless	Veterans	Households with Children	Households without Children	Households with only Children
16%	19%	0%	50%	16%	N/A
n = 176	n = 80	n = 5	n = 2	n = 174	

Orange County CoC Goal: At least 10% of adults who were active during the reporting period in Emergency Shelter projects with a length of stay of at least 365 days have increased their income during their project enrollment.

Why? Income is critical to maintaining most permanent housing situations. Clients receiving intensive service from Emergency Shelter projects that necessitate lengths of stay of 365 or more days should receive services that help to increase their income.

Enrollments by Stayer Income Status

- Maintained
- Increased
- Unknown
- Decreased



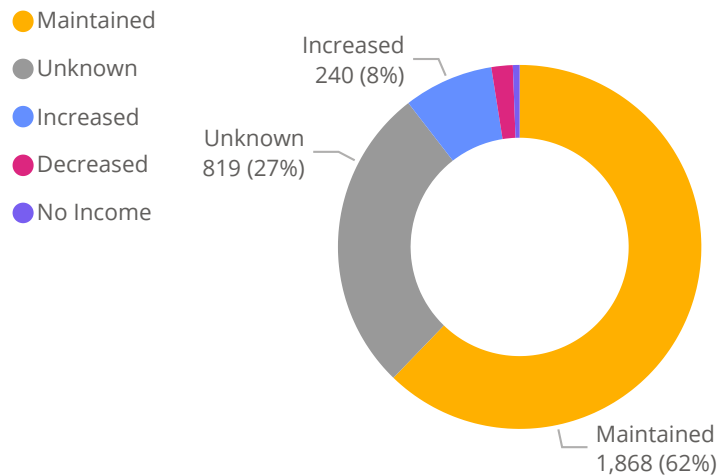
Goal 7 - Help Adults Increase Their Income as of Project Exit

Goal 7 Scores					
Threshold: >=15%					
Project Type Score	Chronically Homeless	Veterans	Households with Children	Households without Children	Households with only Children
8%	5%	6%	29%	5%	N/A
n = 3,002	n = 1,307	n = 224	n = 363	n = 2,639	

Orange County CoC Goal: At least 15% of adult clients who exited from a Emergency Shelter project during the reporting period have increased their income between project entry and project exit.

Why? Income is critical to maintaining most permanent housing situations.

Enrollments by Leaver Income Status



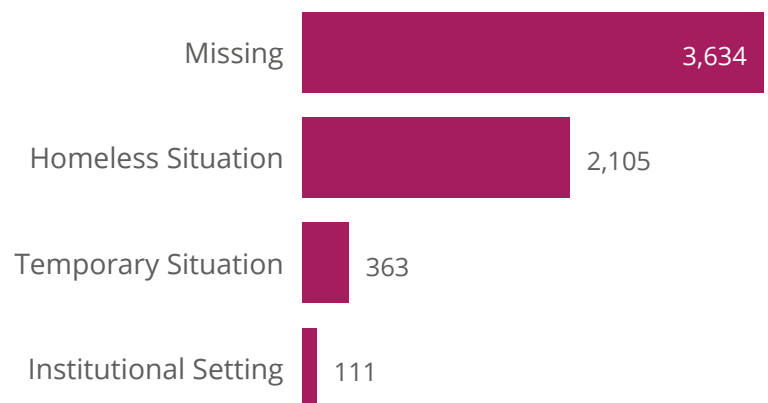
Goal 8 - Help Clients Exit to Successful Housing Situations

Goal 8 Scores					
Threshold: >=30%					
Project Type Score	Chronically Homeless	Veterans	Households with Children	Households without Children	Households with only Children
19%	11%	15%	52%	10%	73%
n = 7,654	n = 2,666	n = 387	n = 1,324	n = 6,176	n = 154

Orange County CoC Goal: At least 30% of Emergency Shelter enrollments exit to a permanent housing situation.

Why? The goal of Emergency Shelter projects is to place clients in permanent housing.

Enrollments by Non-Permanent Exit Category



Goal 10 - Ensure Clients Do Not Fall Back Into Homelessness after being Housed

Goal 10 Scores

Threshold: <=15%

Project Type Score	Chronically Homeless	Veterans	Households with Children	Households without Children	Households with only Children
9%	12%	12%	4%	12%	6%
n = 2,621	n = 2,666	n = 117	n = 999	n = 1,302	n = 320

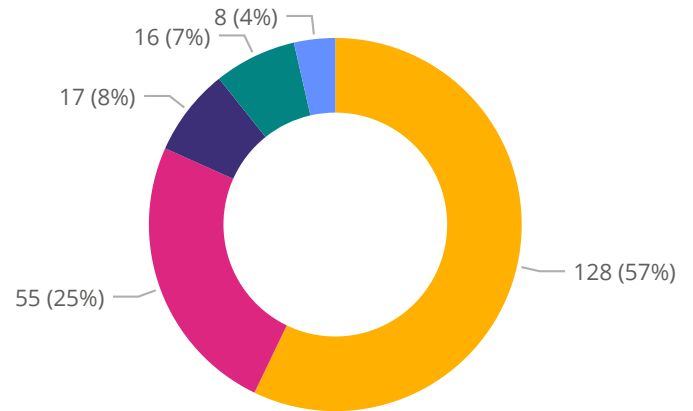
Orange County CoC Goal: No more than 15% of clients who exit from a Emergency Shelter project to a permanent housing destination subsequently return to homelessness.

Why? Returning to homelessness after being placed in a permanent housing situation is traumatizing for clients.

Efforts to make sure clients can maintain the permanent housing situation they are exited to should be prioritized. In addition to being a traumatic experience for clients, re-housing clients who could not maintain the permanent housing situation they were exited to represents resources spent on the same client that could have been used to place another client into permanent housing.

Enrollments by Project Type Returned to

- Emergency Shelter
- Street Outreach
- RRH
- Transitional Housing
- PSH-OPH



Enrollments by Initial Permanent Housing Exit Type

