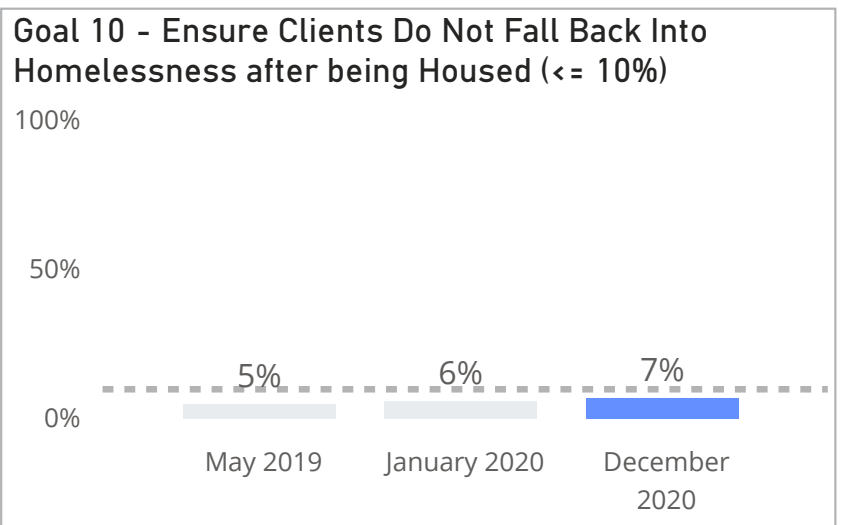
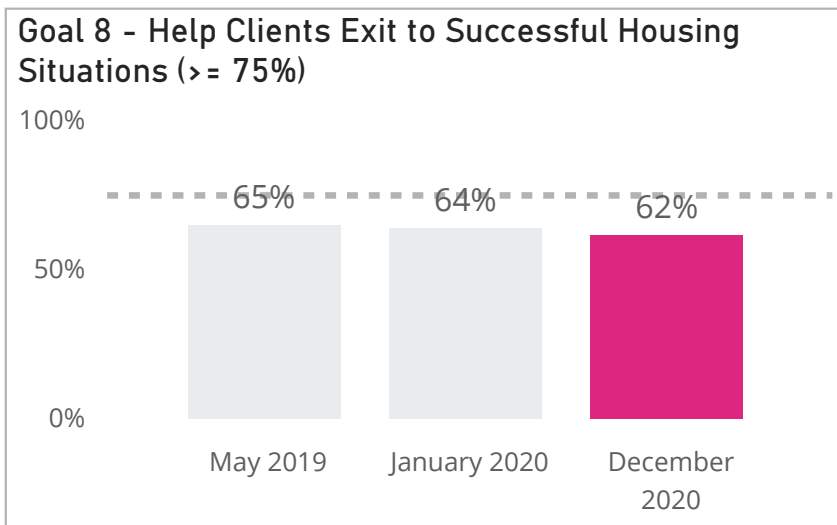
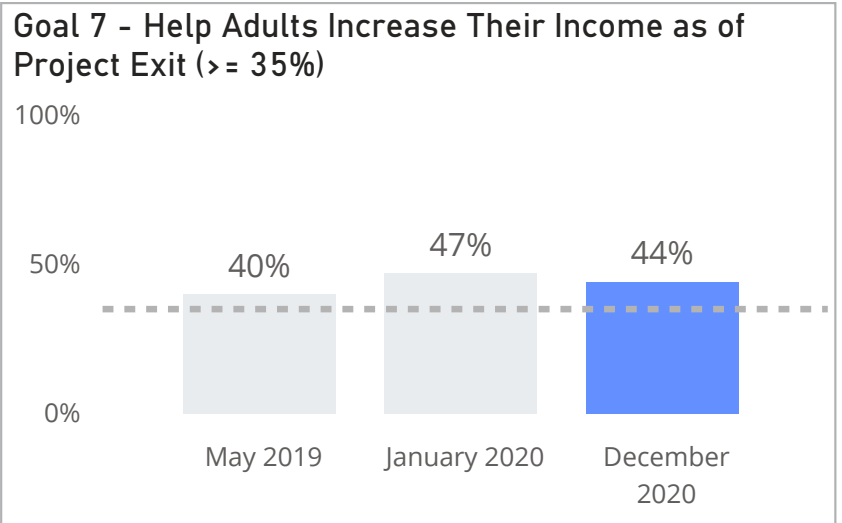
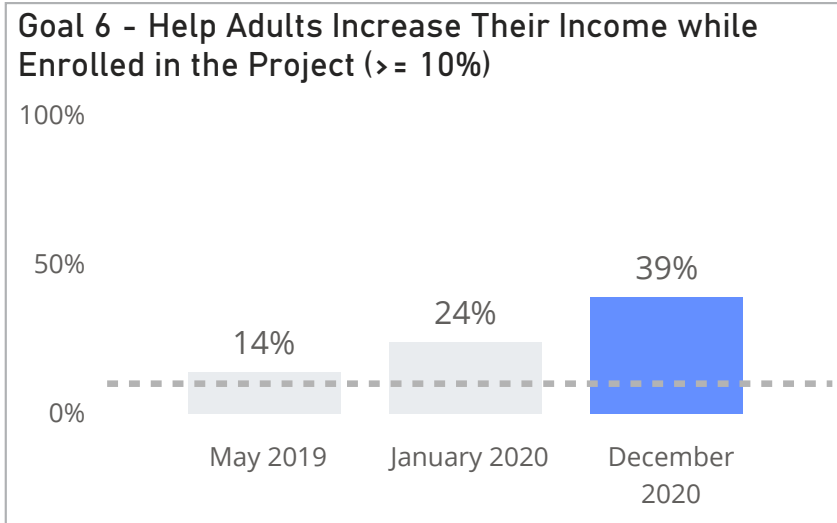
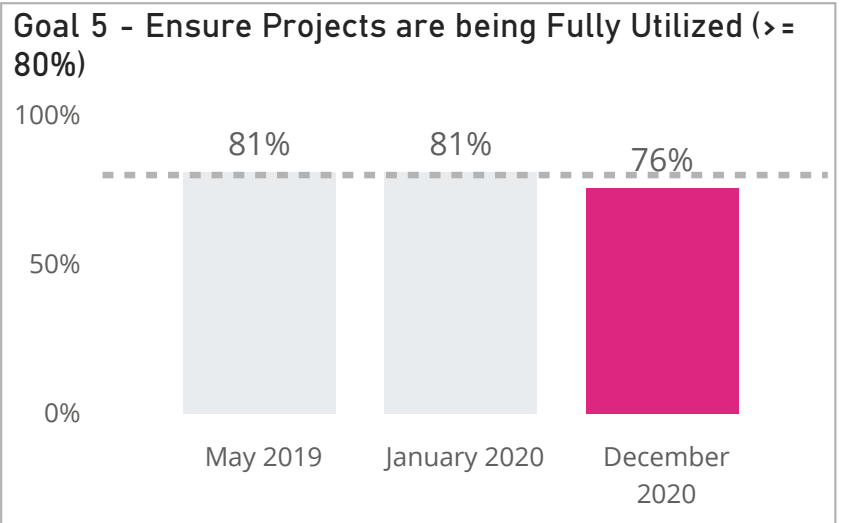
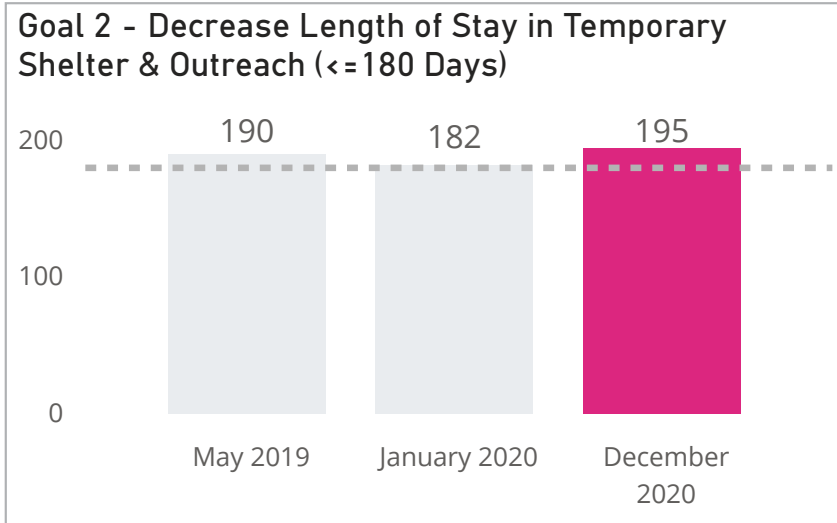
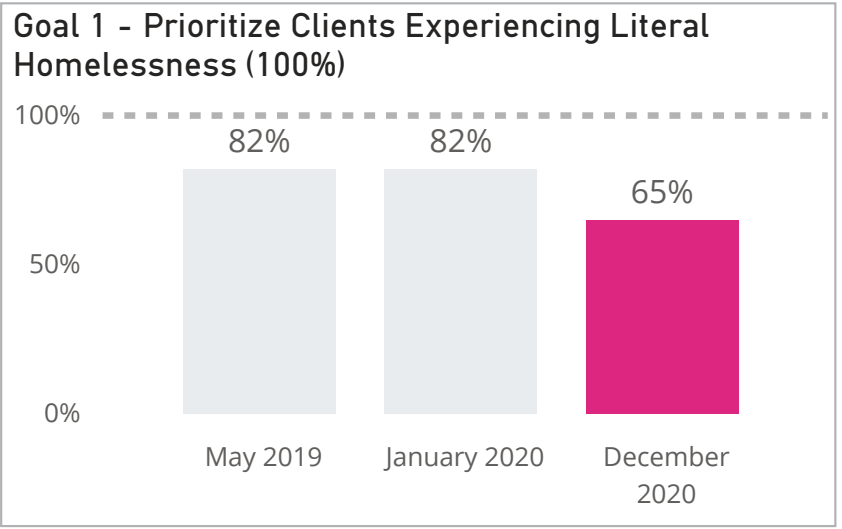


# Orange County Transitional Housing Goals & Outcomes

10/1/2019 to 9/30/2020

Transitional Housing projects in the Orange County Continuum of Care (CoC) met **3 out of 7** thresholds as a project type.



# Goal 1 - Prioritize Clients Experiencing Literal Homelessness

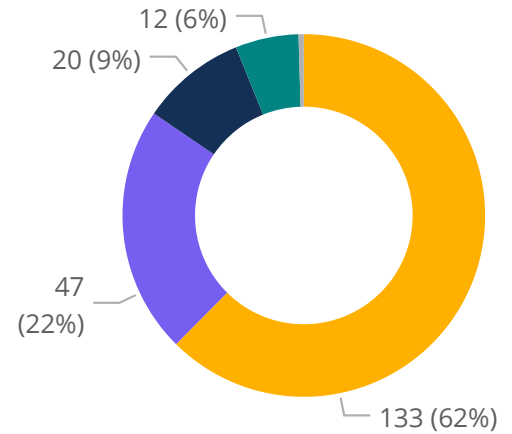


**Orange County CoC Goal:** 100% of heads of household enroll in Transitional Housing projects from homeless situations.

**Why?** Enrolling clients from literal homeless situations is important because clients experiencing literal homelessness are among the most vulnerable of all Orange County residents experiencing homelessness.

## Enrollments by Non-Homeless Entry Category

- Institutional Setting
- Family/Friends
- Temporary Situation
- Permanent Housing
- Missing



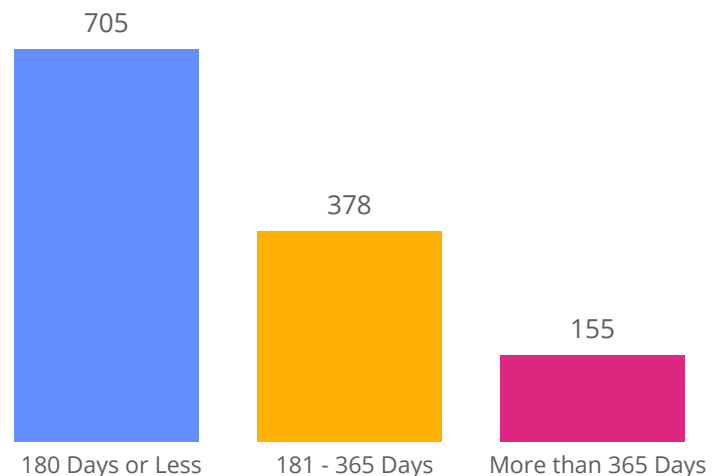
# Goal 2 - Decrease Length of Stay in Temporary Shelter & Outreach



**Orange County CoC Goal:** Transitional Housing project enrollments are no longer than 180 days from project entry to project exit.

**Why?** The purpose of Transitional Housing projects is to move clients into permanent housing situations. HUD's guidance is that clients should spend no more than 24 months in Transitional Housing projects.

## Enrollments by Length of Stay



# Goal 5 - Ensure Projects are being Fully Utilized

## Goal 5 Scores

Threshold: >=80%

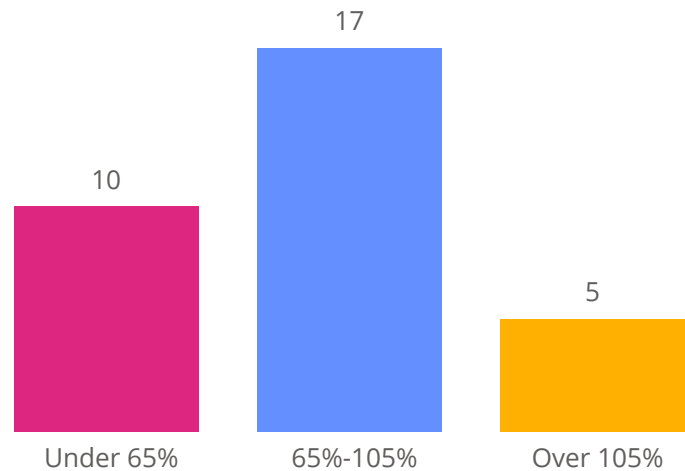
Project Type	Households with Children	Households without Children	Households with Only Children
76%	77%	61%	132%

**Orange County CoC Goal:** Transitional Housing projects have a unit utilization score of at least 80%.

**Why?** To ensure that clients experiencing homelessness are being sheltered while they move toward permanent housing.

Scores under 65% and above 105% can sometimes be caused by data timeliness issues such as enrollments not being entered in HMIS or exited from HMIS in a timely manner.

## Projects by Utilization Category



# Goal 6 - Help Adults Increase Their Income while Enrolled in the Project

## Goal 6 Scores

Threshold >=10%

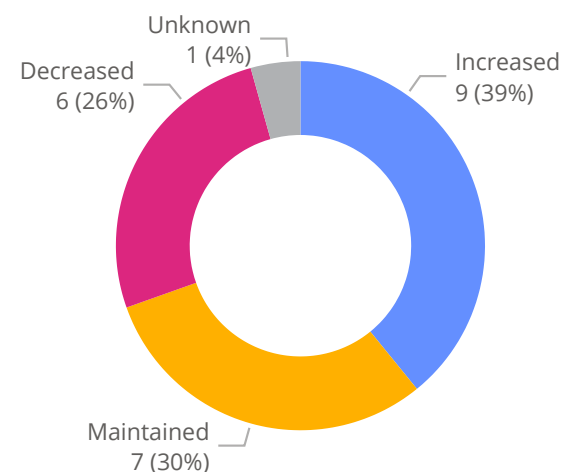
Project Type	Chronic Homeless	Veterans	Families	Individuals
39%	N/A	N/A	33%	100%

**Orange County CoC Goal:** At least 10% of adults who were active during the reporting period in Transitional Housing projects with a length of stay of at least 365 days have increased their income during their project enrollment.

**Why?** Income is critical to maintaining most permanent housing situations. Clients receiving intensive service from Transitional Housing projects that necessitate lengths of stay of 365 or more days should receive services that help to increase their income.

## Enrollments by Stayer Income Status

- Increased
- Maintained
- Decreased
- Unknown



# Goal 7 - Help Adults Increase Their Income as of Project Exit

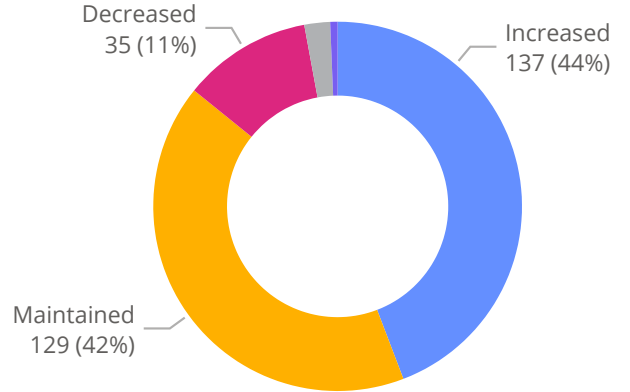


**Orange County CoC Goal:** At least 35% of adult clients who exited from a Transitional Housing project during the reporting period have increased their income between project entry and project exit.

**Why?** Income is critical to maintaining most permanent housing situations.

## Enrollments by Leaver Income Status

- Increased
- Maintained
- Decreased
- Unknown
- No Income



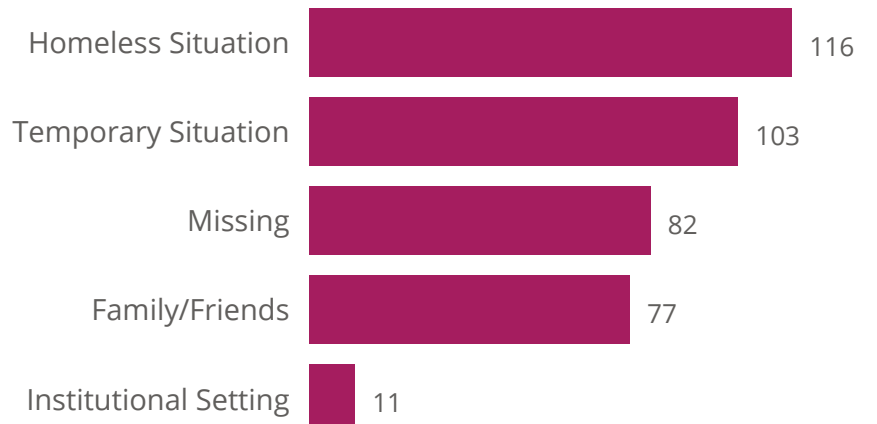
# Goal 8 - Help Clients Exit to Successful Housing Situations



**Orange County CoC Goal:** At least 75% of Transitional Housing enrollments exit to a permanent housing situation.

**Why?** The goal of Transitional Housing projects is to place clients in permanent housing.

## Enrollments by Non-Permanent Exit Category



# Goal 10 - Ensure Clients Do Not Fall Back Into Homelessness after being Housed

## Goal 10 Scores

Threshold: <=10%

Project Type	Chronic Homeless	Veterans	Families	Individuals
7%	10%	33%	7%	7%

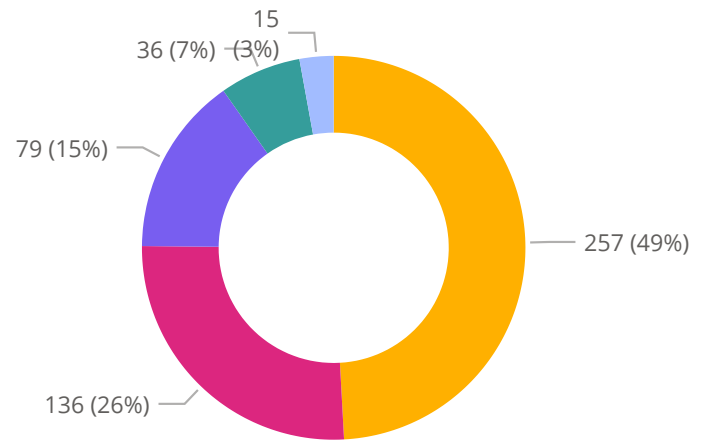
**Orange County CoC Goal:** No more than 10% of clients who exit from a Transitional Housing project to a permanent housing destination subsequently return to homelessness.

**Why?** Returning to homelessness after being placed in a permanent housing situation is traumatizing for clients.

Efforts to make sure clients can maintain the permanent housing situation they are exited to should be prioritized. In addition to being a traumatic experience for clients, re-housing clients who could not maintain the permanent housing situation they were exited to represents resources spent on the same client that could have been used to place another client into permanent housing.

## Enrollments by Project Type Returned to

- Emergency Shelter
- Street Outreach
- Rapid Re-Housing
- Transitional Housing
- PSH-OPH



## Enrollments by Initial Permanent Housing Exit Type

